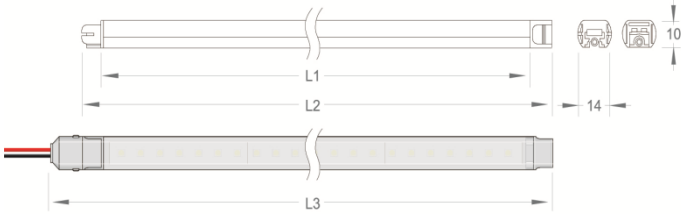
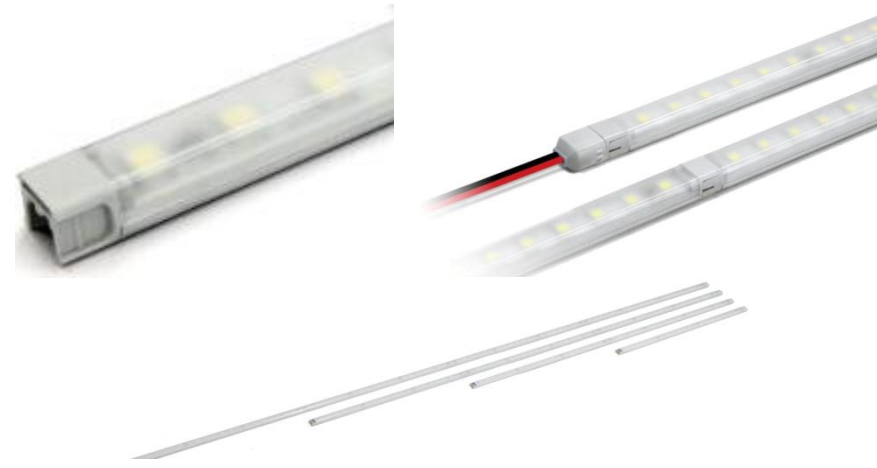


## 図面 (mm)



14(W) x 10(H) x 296(L)  
 14(W) x 10(H) x 590(L)  
 14(W) x 10(H) x 903(L)  
 14(W) x 10(H) x 1178(L)

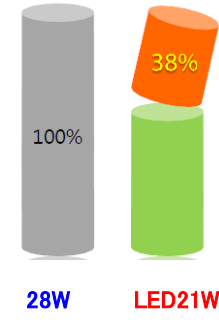
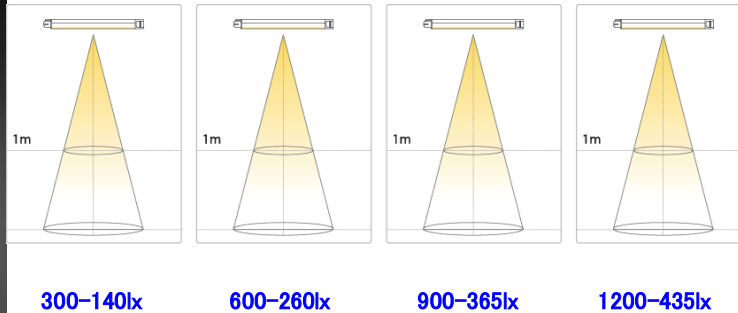
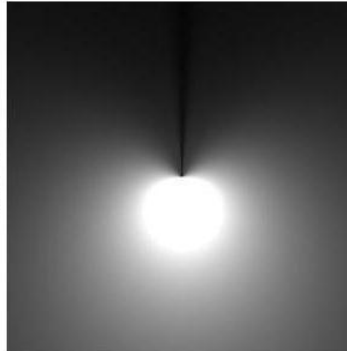
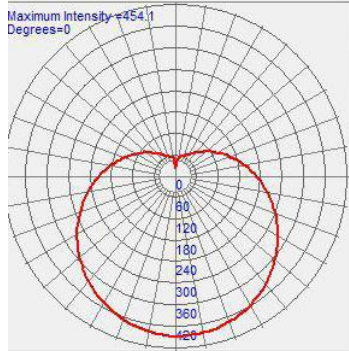


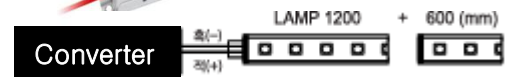
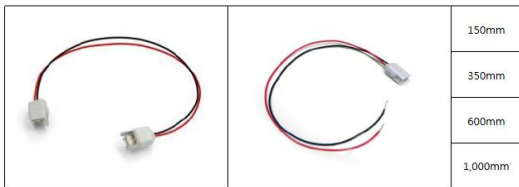
## 経済の効率の比較

## 仕様書

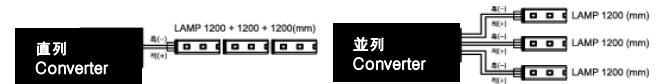
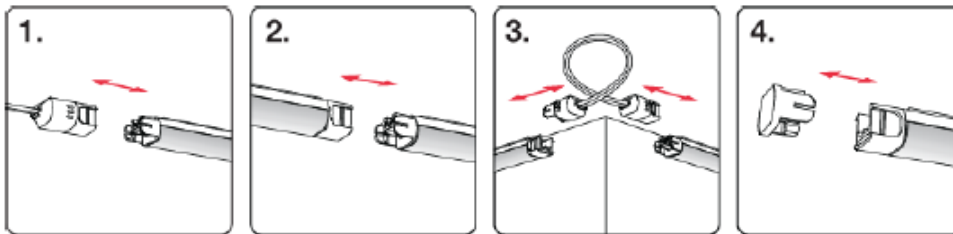
区分	PL 32W	LED ランプ	消費電力(W)	全光束 (lm)	色温度 (k)	演色数 (Ra)	照射角 (°)	サイズ	質量 (Kg)	寿命 (hr)	入力電圧 (V)	素材	製品名
消費電力(W)	32	21	7	140	3000K	75	120	300 600 900 1200	0.28	40,000	110VAC 220VAC /H z	Aluminium, Polycarbonate FINISH - Anodizing	
効果	3.336	2,294	14	260	4000K								
寿命	1.000	50,000	17	365	5700K								
			21	435									

## 光学





最大 1,800mm (1200+600) / 30W



最大 3,600mm / 60W

